

PROJECT	TYPE	NOTES

OVERVIEW

The WW123 in-ground LED lights are solidly constructed of corrosion resistant 304 stainless steel. The WW123 fixtures are rated for walk-over and roll over applications. These in-ground lights are perfect for interior and exterior in-ground lighting applications.

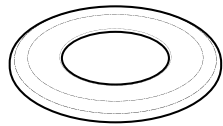


TECHNICAL SPECIFICATIONS

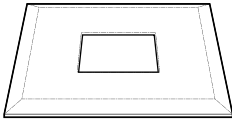
Operating Voltage	12VDC
Power Consumption S0/H0	3W
Lumens Delivered (3000K)	224lm
Efficacy (3000K)	75lm/W
LED Chip	COB
Color Temperatures	3000K, 5000K, RGBW
CRI	82
MacAdam Ellipse Binning	3-step
Beam (Static / RGBW)	30°, 120°
Dimmable	YES
Housing	304 Stainless Steel
Trims	304 Stainless Steel
IP Rating	67
Maximum Load	500kg / 1100lbs
Warranty	5 years



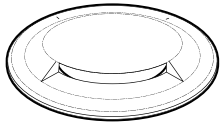
DIMENSIONS



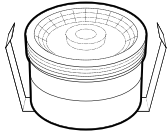
Round Trim
Ø - 2.4"
H - 0.1"



Square Trim
W - 2.4" x 2.4"
H - 0.1"

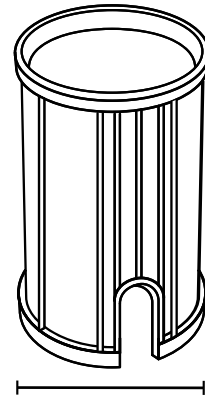


Directional Trim
Ø - 2.4"
H - 0.4"



Housing
Ø - 1.6"
H - 1.2"

IGC - In-Ground Cylinder



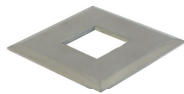
H - 5.5"

Ø - 2.2"

TRIMS



SSR - Stainless Steel Round



SSS - Stainless Steel Square



SS1 - Stainless Steel 1-Way



SS2 - Stainless Steel 2-Way



SS3 - Stainless Steel 3-Way



BLR - Black Round



BLS - Black Square



BL1 - Black 1-Way



BL2 - Black 2-Way



BL3 - Black 3-Way

INSTALLATION



Wood/Stone - Drill/core Ø1-3/4" hole. Install directly into material.



Concrete - Mount into 1-1/2" PVC coupler or into 1-1/2" Class 200 PVC.



Soil/Gravel - Mount into IGC - In-ground cylinder.



ORDER CODE

WW123	-	-	WW123-IGC
-------	---	---	-----------

CCT

- 3K** - 3000K
- 5K** - 5000K
- RGBW** - RGB+W

TRIM

- SSR** - Stainless Round
- SSS** - Stainless Square
- SS1** - Stainless 1-Way
- SS2** - Stainless 2-Way
- SS3** - Stainless 3-Way
- BLR** - Black Round
- BLS** - Black Square
- BL1** - Black 1-Way
- BL2** - Black 2-Way
- BL3** - Black 3-Way

MOUNTING - In-ground cylinder

DRIVER CUTSHEETS

DESCRIPTION	INPUT	OUTPUT	WATTAGES	SPECIFICATION SHEETS
Non-Dimming Indoor	120VAC	12VDC	15W, 30W	DR-12VDC
Non-Dimming Indoor/Outdoor	120VAC	12VDC	30W-60W	DR-12VDC-OUT
Universal Phase Dimming Indoor	120VAC	12VDC	24W 48W 60W	DR-12VDC-DIMA
Univ. Phase/0-10V Dimming Ind./Out.	100-277VAC	12VDC	30W-150W	DR-12VDC-DIMS-UNV
RGB/W Controller Indoor	12-36VDC	12-36VDC	768W max.	DR-RGBW-WIFI-CON
RGB/W DMX Controller	12-24VDC	12-24VDC	N/A	DR-DMX-RGBW-WIFI-CON
5 Channel DMX Decoder	12-24VDC	12-24VDC	960W max.	DR-DMX-5CH-DEC

VOLTAGE DROP CALCULATOR Wire Gauge Calculator - Load vs AWG vs Max. Distance Away From Driver

LOAD (WIRE GAUGE)	10W	20W	30W	40W	50W	60W
20AWG	18 ft	9 ft	6 ft	5 ft	4 ft	3 ft
18AWG	34 ft	17 ft	11 ft	8 ft	6 ft	5 ft
16AWG	54 ft	27 ft	18 ft	13 ft	10 ft	9 ft
14AWG	86 ft	43 ft	29 ft	21 ft	17 ft	14 ft
12AWG	134 ft	68 ft	45 ft	34 ft	27 ft	22 ft
10AWG	199 ft	99 ft	66 ft	49 ft	39 ft	33 ft

