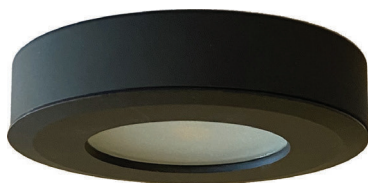


PROJECT	TYPE	NOTES

OVERVIEW

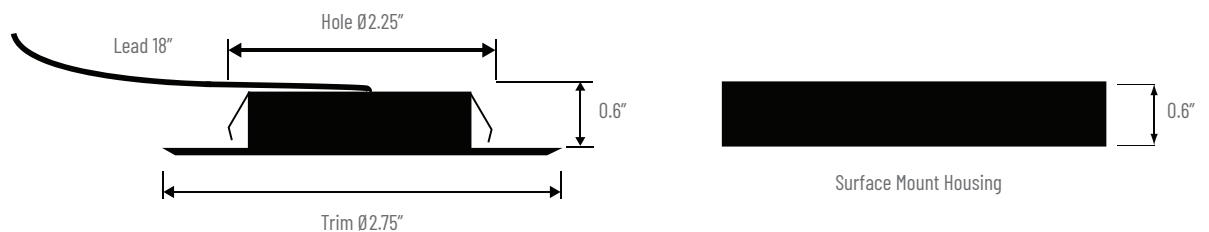
The UC124 LED puck light uses a single chip COB and a frosted glass lens to reduce the traditional scalloping effect produced by traditional halogen puck lights. With a CRI of 90+ these LED puck lights offer exceptional color rendering. Great for indoor and outdoor applications these puck lights are offered in multiple CCTs, RGB, RGBW and Classic Dim (DtW) options. Available as surface or recessed mount.



TECHNICAL SPECIFICATIONS

Operating Voltage	12VDC
Power Consumption	4W
Lumens Delivered (3000K)	277lm
Efficacy (3000K)	74lm/W
LED Chips	Static Color - COB/CD(DtW) - Array
Color Temperatures	2700K, 3000K, 4000K, RGBW, CD (DtW)
CRI	90+
R9 Value	54
MacAdam Ellipse Binning	3-step
LED Life	50,000 hrs
Dimmable	YES (2%)
Warranty	5 years

DIMENSIONS



ORDER CODE

UC124	-	-
-------	---	---

CRI / CCT

- 927** - 90+ / 2700K
- 930** - 90+ / 3000K
- 940** - 90+ / 4000K
- RGBW** - RGB White
- CD** - Classic Dim (DtW)
3000-1800K

FINISH

- BL** - Black
- BS** - Brushed Steel
- WH** - White

DRIVER CUTSHEETS

DESCRIPTION	INPUT	OUTPUT	WATTAGES	SPECIFICATION SHEETS
Non-Dimming Indoor	120VAC	12VDC	15W, 30W	DR-12VDC
Non-Dimming Indoor/Outdoor	120VAC	12VDC	30W-264W	DR-12VDC-OUT
Universal Phase Dimming Indoor	120VAC	12VDC	24W 48W 60W	DR-12VDC-DIMA
Univ. Phase/0-10V Dimming Ind./Out.	100-277VAC	12VDC	30W-300W	DR-12VDC-DIMS-UNV
RGB/W Controller Indoor	12-36VDC	12VDC	768W max.	DR-RGBW-WIFI-CON
RGB/W DMX Controller	12-24VDC	12VDC	N/A	DR-DMX-RGBW-WIFI-CON
5 Channel DMX Decoder	12-24VDC	12VDC	960W max.	DR-DMX-5CH-DEC

VOLTAGE DROP CALCULATOR Wire Gauge Calculator - Load vs AWG vs Max. Distance Away From Driver

LOAD (WIRE GAUGE)	10W	20W	30W	40W	50W	60W
20AWG	18 ft	9 ft	6 ft	5 ft	4 ft	3 ft
18AWG	34 ft	17 ft	11 ft	8 ft	6 ft	5 ft
16AWG	54 ft	27 ft	18 ft	13 ft	10 ft	9 ft
14AWG	86 ft	43 ft	29 ft	21 ft	17 ft	14 ft
12AWG	134 ft	68 ft	45 ft	34 ft	27 ft	22 ft
10AWG	199 ft	99 ft	66 ft	49 ft	39 ft	33 ft

