

PROJECT	TYPE	NOTES
---------	------	-------

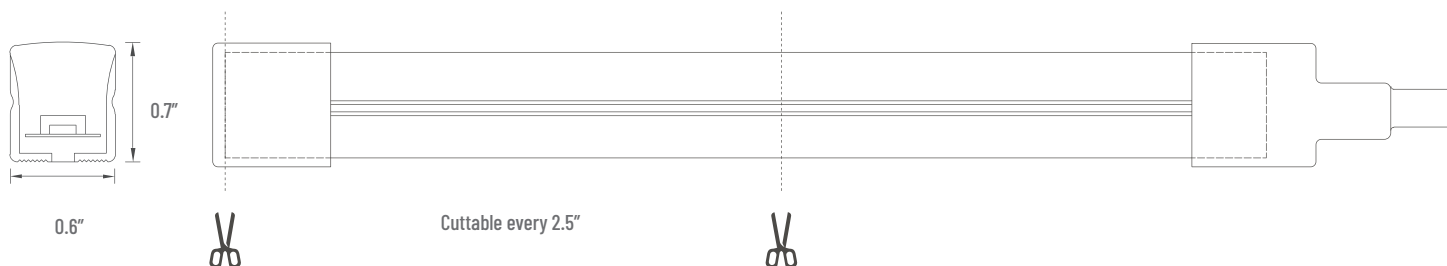
OVERVIEW

The TL24NEON-S sauna-rated neon is specifically designed for sauna applications. Low temperature rise during operation and construction of high heat and heat resistant materials allows for use in saunas. Constructed of UV, chemical and salt water resistant silicone and being IP68 rated allows this product to stand up to the most challenging environments.

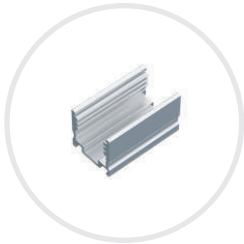


TECHNICAL SPECIFICATIONS

Operating Voltage	24VDC
Power Consumption	1.8W /ft
Lumens/ft (3000K)	114lm/ft
Efficacy (3000K)	65lm/W
Color Temperatures	2400K, 2700K 3000K, 3500K, 4000K, Custom CCT
Colors	Red, Green, Blue, Yellow, Custom Color
CRI	80+
Beam Spread	120°
LED Life	50,000 hrs
Cutable Increments	2.5"
Min. Bend Radius - Top/Side	2.5"
Maximum Run Length	32.8'
Warranty	5 years



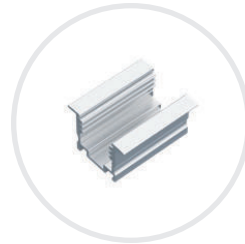
MOUNTING AND INSTALLATION ACCESSORIES



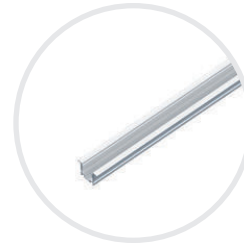
TL24NEON-S-ACL
Aluminum clip



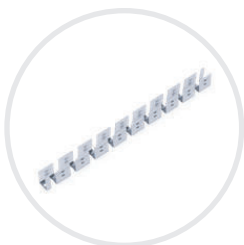
TL24NEON-S-AC
Aluminum channel



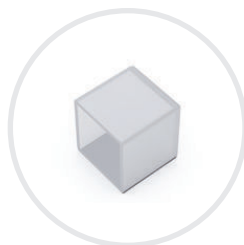
TL24NEON-S-ACLR
Aluminum clip recessed



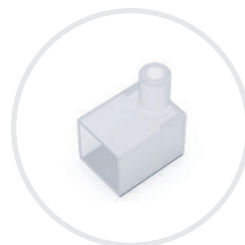
TL24NEON-S-ACR
Aluminum channel recessed



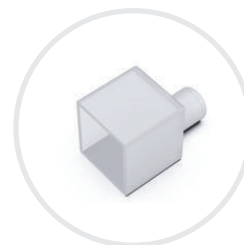
TL24NEON-S-ST
Stainless steel S-track



TL24NEON-S-EC
Silicone end cap



TL24NEON-S-PFB
Power feed side/bottom (field solder)



TL24NEON-S-PFI
Power feed inline (field solder)

ORDER CODE

TL24NEON	S	-	-	-
----------	---	---	---	---




BEND
TB - Top Bend
SB - Side Bend

CCT / COLOR
24 - 2400K
27 - 2700K
30 - 3000K
35 - 3500K
40 - 4000K
RD - Red
GR - Green
BL - Blue
YL - Yellow
XX - Custom

ROLL LENGTH
10 - 10M/32.8ft
XX - Custom



DRIVER CUTSHEETS

DESCRIPTION	INPUT	OUTPUT	WATTAGES	SPECIFICATION SHEETS	
Non-Dimming Indoor/Outdoor	90-305VAC	24VDC	40W-480W	DR-24VDC-OUT	
Universal Phase Dimming Indoor	120VAC	24VDC	24W/48W/60W	DR-24VDC-DIMA	
Universal Phase Dimming In/Outdoor	100-277VDC	24VDC	30W-300W	DR-24VDC-DIMS-UNV	

VOLTAGE DROP CALCULATOR Load vs AWG vs Max. Distance Away From Driver

LOAD (WIRE GAUGE)	10W	20W	30W	40W	50W	60W	70W	80W	90W	100W
20AWG	85 ft	43 ft	27 ft	21 ft	17 ft	14 ft	12 ft	11 ft	9 ft	8 ft
18AWG	134 ft	68 ft	45 ft	33 ft	27 ft	22 ft	19 ft	17 ft	15 ft	14 ft
16AWG	215 ft	109 ft	72 ft	54 ft	43 ft	36 ft	31 ft	27 ft	24 ft	22 ft
14AWG	345 ft	174 ft	115 ft	86 ft	69 ft	57 ft	49 ft	43 ft	39 ft	36 ft
12AWG	539 ft	272 ft	181 ft	135 ft	108 ft	90 ft	77 ft	68 ft	61 ft	56 ft
10AWG	784 ft	397 ft	263 ft	197 ft	158 ft	131 ft	112 ft	98 ft	87 ft	82 ft

