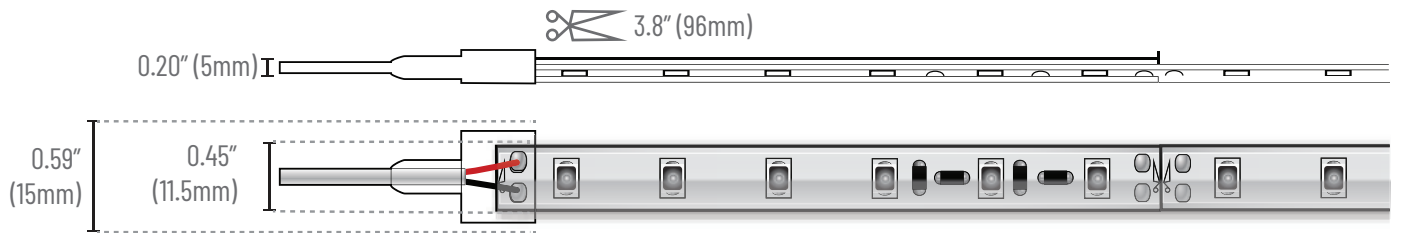


PROJECT	TYPE	NOTES
<p>OVERVIEW</p> <p>The TL24HO-60-AMB-OUT flexible strip light uses specific LED chips designed to meet Turtle Friendly requirements. Wavelength is 590-595nm meeting wildlife requirements for applications in turtle friendly zones.</p>		

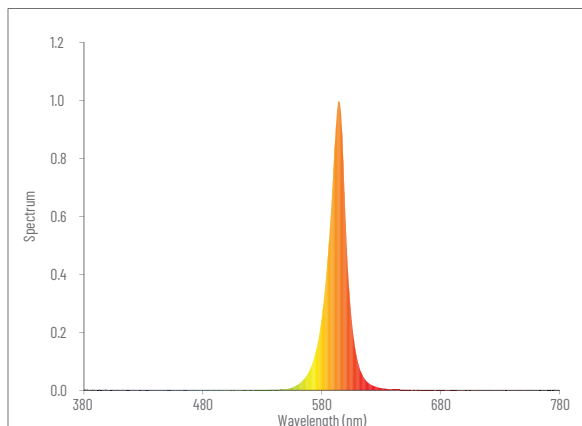
IP67



IP67 - OUTDOOR



CHIP DATA



TECHNICAL SPECIFICATIONS

Operating Voltage	24VDC
Power Consumption	3W/ft
Lumens/ft	78lm/ft
Efficacy	26lm/W
Dimming Levels	0/1% (0-10V) 1% Phase
LED Chips/ft	18/ft
LED Pitch	0.66"
Color Temperature	Turle Friendly Amber 590-595nm
LED Life	50,000 hrs
Cuttable Increments	3.8"
Max. Run Length	32.8ft
Warranty	5 years

IES FILE

 [DOWNLOAD](#)

IP67 SOLDERLESS CONNECTORS

These connectors are simple to use on site. The pins pierce the PCB, giving a solid and permanent IP67 connection.



TL10-OUT-SC1 - Link



TL10-OUT-SC2 - Lead 12"



TL10-OUT-SC3 - Jumper 6"

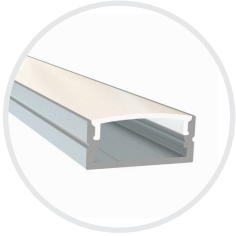
ORDER CODE

TL24HO	60	AMB	-	OUT
--------	----	-----	---	-----

ROLL LENGTH
 10 - 10M/32.8ft
 XX - Custom



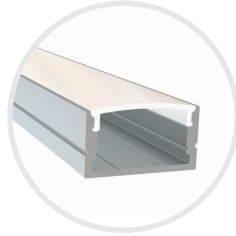
STANDARD ALUMINUM PROFILES (2.4M / 7.8FT)



AP-13-2.4



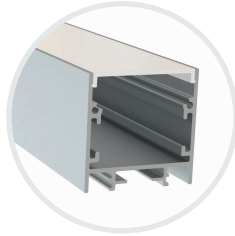
Profile Medium
WxH 0.93" x 0.39"
Finish Silver
Lens Frosted
Imaging 0



AP-05-2.4



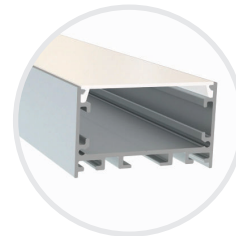
Profile Medium High
WxH 0.93" x 0.51"
Finish Silver
Lens Frosted
Imaging 0



AP-04-2.4



Profile Large Square
WxH 1.44" x 1.44"
Finish Silver, Black
Lens Frosted, Black
Imaging 0



AP-21-2.4



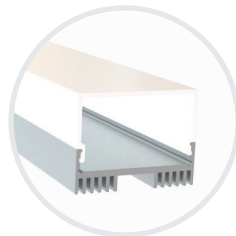
Profile Large Wide
WxH 1.97" x 1.16"
Finish Silver, Black
Lens Frosted
Imaging 0



AP-02-2.4



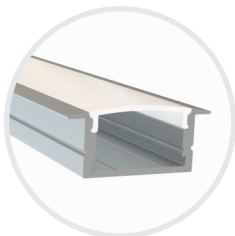
Profile Small Square Side
WxH 0.80" x 0.80"
Finish Silver
Lens Frosted
Imaging 0



AP-03-2.4



Profile Medium Side Lens
WxH 1.14" x 0.88"
Finish Silver
Lens Frosted
Imaging 0



AP-06-2.4



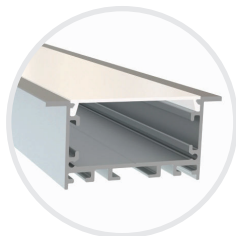
Profile Medium High Recessed
WxH 0.93" x 0.50"
Finish Silver
Lens Frosted
Imaging 0



AP-19-2.4



Profile Large Square Recessed
WxH 1.44" x 1.44"
Finish Silver
Lens Frosted
Imaging 0



AP-20-2.4



Profile Large Wide Recessed
WxH 1.97" x 1.16"
Finish Silver
Lens Frosted
Imaging 0

0 - NO IMAGING

1 - MINMAL IMAGING

2 - DEFINED IMAGING



ALUMINUM PROFILES (1M / 3.28FT)



AP-LL8-L

Profile Large Corner Mount
 WxH 1.20" x 1.20"
 Finish Silver
 Lens Frosted
 Imaging 0

0 - NO IMAGING	
1 - MINMAL IMAGING	
2 - DEFINED IMAGING	

DRIVER CUTSHEETS

DESCRIPTION	INPUT	OUTPUT	WATTAGES	SPECIFICATION SHEETS	
Non-Dimming Indoor-Outdoor	90-305VAC	24VDC	40W-480W	DR-24VDC-OUT	
Phase Dimming Indoor	100-130VAC	24VDC	24W-60W	DR-24VDC-DIMA	
0.5% & 1% Universal Dimming	100-277VAC	24VDC	30W-300W	DR-24VDC-DIMS-UNV	
0.1% & 1% Universal Dimming	120-277VAC	24VDC	96W	DR-24VDC-DIML-UNV	

VOLTAGE DROP CALCULATOR

LOAD (WIRE GAUGE)	10W	20W	30W	40W	50W	60W	70W	80W	90W	100W
20AWG	85 ft	43 ft	27 ft	21 ft	17 ft	14 ft	12 ft	11 ft	9 ft	8 ft
18AWG	134 ft	68 ft	45 ft	33 ft	27 ft	22 ft	19 ft	17 ft	15 ft	14 ft
16AWG	215 ft	109 ft	72 ft	54 ft	43 ft	36 ft	31 ft	27 ft	24 ft	22 ft
14AWG	345 ft	174 ft	115 ft	86 ft	69 ft	57 ft	49 ft	43 ft	39 ft	36 ft
12AWG	539 ft	272 ft	181 ft	135 ft	108 ft	90 ft	77 ft	68 ft	61 ft	56 ft
10AWG	784 ft	394 ft	263 ft	197 ft	158 ft	131 ft	112 ft	98 ft	87 ft	82 ft

