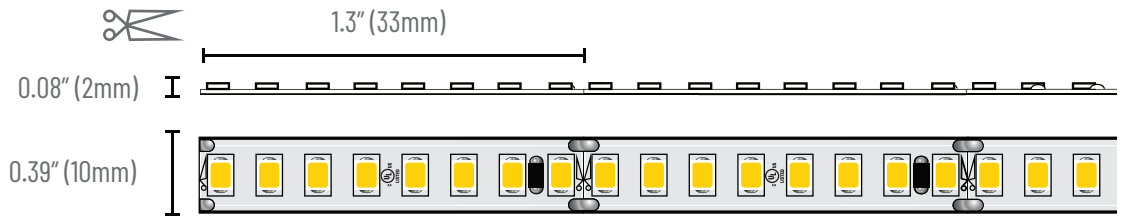


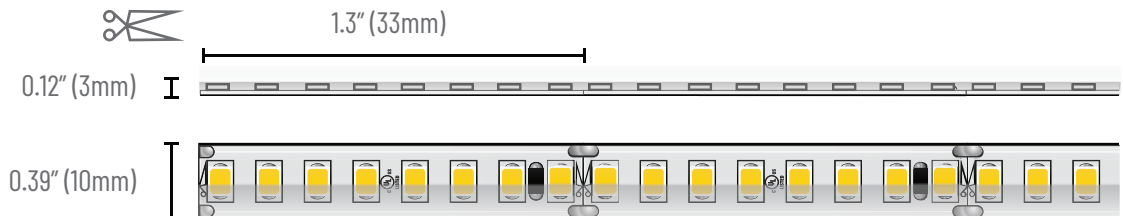
PROJECT	TYPE	NOTES
<h3>OVERVIEW</h3> <p>The TL24HE-240 flexible strip light uses high density LED chips to produce exceptional illumination. With high efficiency chips you get an average of 163lm/W. This product is perfect for direct view and shallow channel applications due to the tight LED pitch. With a CRI of 97 and an R9 value of 98, these LED chips offer exceptional color rendering. All of our flexible LED strips utilize silicone coating and jacketing that guarantees consistency across our IP20, IP65 and IP67 strips.</p>		



### IP20 - INDOOR



### IP65 - MOISTURE PROOF



TECHNICAL SPECIFICATIONS

Operating Voltage	24VDC
Power Consumption	1W/ft, 1.8W/ft, 3W/ft, 4.4W/ft, 5.5W/ft, 6.6W/ft
Lumens/ft (3000K)	159lm/ft, 297 lm/ft, 495lm/ft, 706lm/ft, 897lm/ft, 1077lm/ft
Efficacy (3000K)	163lm/W (average)
Dimming Levels	0/1% (0-10V) 1% Phase
LED Chips/ft	73/ft
LED Pitch	0.16"
Color Temperatures	1800K, 2200K, 2400K, 2700K, 3000K, 3500K, 4000K, 5000K
CRI	97
R9 Value	98
MacAdam Ellipse Binning	2-step
LED Life	50,000 hrs
Cutable Increments	1.3"
Max. Run Length	1W/ft - 96ft, 1.8W/ft - 56ft, 3W/ft 32.8ft, 4.4W/ft - 21ft, 5.6W/ft - 18ft, 6.6W/ft - 16.4ft
Warranty	5 years

IES FILES (3000K)

 [DOWNLOAD](#)

SOLDERLESS CONNECTORS

These connectors fit into our smallest channels. The connectors pierce the PCB, giving a solid and permanent connection.



TL10-SC1 - Link



TL10-SC2 - Lead 12"



TL10-SC3 - Jumper 6"



TL10-SC4 - 90° Corner

ORDER CODE

TL24HE	240	-	-	-	-
--------	-----	---	---	---	---

WATTAGE

- 1 - 1W/ft
- 2 - 1.8W/ft
- 3 - 3.0W/ft
- 5 - 4.4W/ft
- 6 - 5.5W/ft
- 7 - 6.6W/ft

ROLL LENGTH

- 918 - 97+ / 1800K
- 922 - 97+ / 2200K
- 924 - 97+ / 2400K
- 927 - 97+ / 2700K
- 930 - 90+ / 3000K
- 935 - 97+ / 3500K
- 940 - 97+ / 4000K
- 950 - 97+ / 5000K

ROLL LENGTH

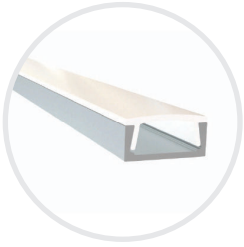
- 5 - 5M/16.4ft
- XX - Custom

IP RATING

- Leave blank for IP20
- MP - Moisture Proof IP65



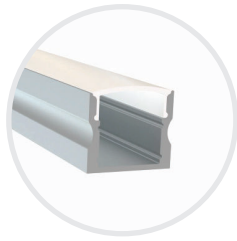
#### STANDARD ALUMINUM PROFILES (2.4M / 7.8FT)



**AP-01-2.4**



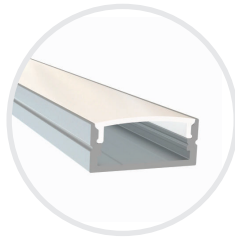
Profile Slim Small  
 WxH 0.66" x 0.31"  
 Finish Silver, Black  
 Lens Frosted  
 Imaging 0



**AP-17-2.4**



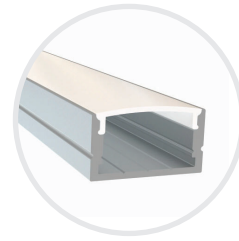
Profile Slim Medium  
 WxH 0.66" x 0.60"  
 Finish Silver, Black  
 Lens Frosted, Black  
 Imaging 0



**AP-13-2.4**



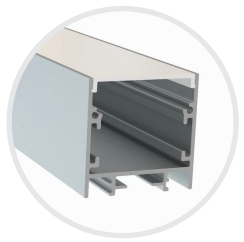
Profile Medium  
 WxH 0.93" x 0.39"  
 Finish Silver  
 Lens Frosted  
 Imaging 0



**AP-05-2.4**



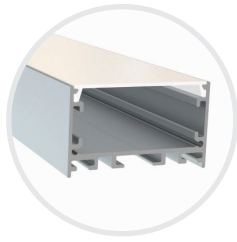
Profile Medium High  
 WxH 0.93" x 0.51"  
 Finish Silver  
 Lens Frosted  
 Imaging 0



**AP-04-2.4**



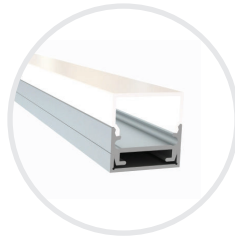
Profile Large Square  
 WxH 1.44" x 1.44"  
 Finish Silver, Black  
 Lens Frosted, Black  
 Imaging 0



**AP-21-2.4**



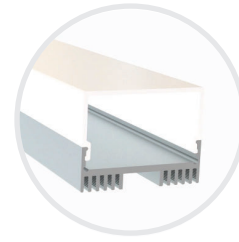
Profile Large Wide  
 WxH 1.97" x 1.16"  
 Finish Silver, Black  
 Lens Frosted  
 Imaging 0



**AP-02-2.4**



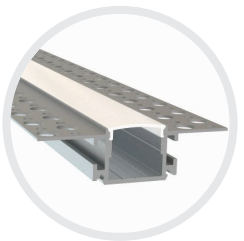
Profile Small Square Side  
 WxH 0.80" x 0.80"  
 Finish Silver  
 Lens Frosted  
 Imaging 0



**AP-03-2.4**



Profile Medium Side Lens  
 WxH 1.14" x 0.88"  
 Finish Silver  
 Lens Frosted  
 Imaging 0



**AP-23-2.4**

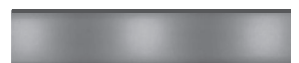


Profile Mud-in  
 WxH 0.93" x 0.61"  
 Finish Silver  
 Lens Frosted  
 Imaging 0

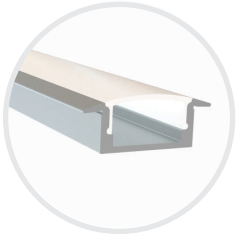
0 - NO IMAGING

1 - MINMAL IMAGING

2 - DEFINED IMAGING



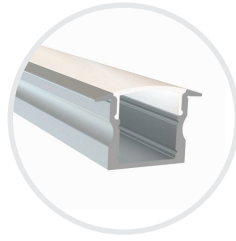
### STANDARD ALUMINUM PROFILES (2.4M / 7.8FT)



#### AP-15-2.4



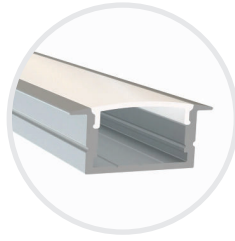
Profile	Slim Small Recessed
WxH	0.66" x 0.31"
Finish	Silver, Black
Lens	Frosted
Imaging	0



#### AP-16-2.4



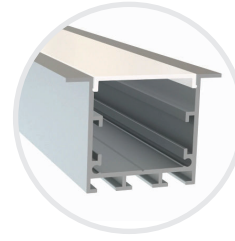
Profile	Slim Medium Recessed
WxH	0.66" x 0.57"
Finish	Silver, Black
Lens	Frosted
Imaging	0



#### AP-06-2.4



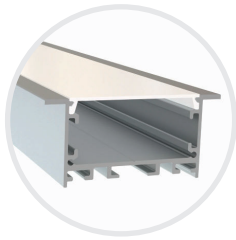
Profile	Medium High Recessed
WxH	0.93" x 0.50"
Finish	Silver
Lens	Frosted
Imaging	0



#### AP-19-2.4



Profile	Large Square Recessed
WxH	1.44" x 1.44"
Finish	Silver
Lens	Frosted
Imaging	0



#### AP-20-2.4



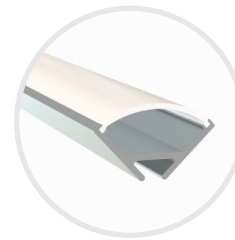
Profile	Large Wide Recessed
WxH	1.97" x 1.16"
Finish	Silver
Lens	Frosted
Imaging	0



#### AP-07-2.4



Profile	Corner Mount Partial Lens
WxH	0.69" x 0.69"
Finish	Silver
Lens	Frosted
Imaging	0



#### AP-08-2.4



Profile	Corner Mount Full Lens
WxH	0.64" x 0.64"
Finish	Silver
Lens	Frosted
Imaging	0

### ALUMINUM PROFILES (1M / 3.28FT)



#### AP-LL8-L

Profile	Large Corner Mount
WxH	1.20" x 1.20"
Finish	Silver
Lens	Frosted
Img Rate	0

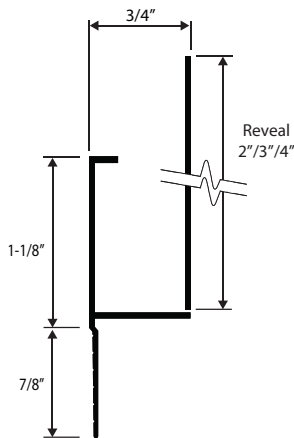
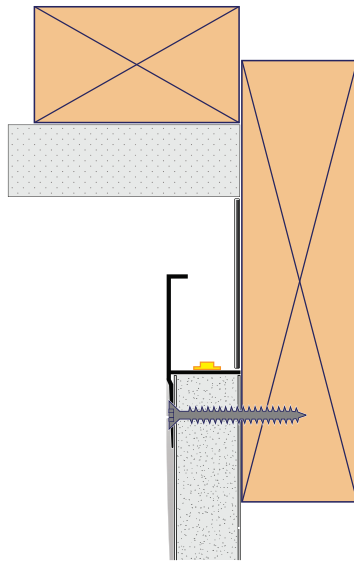
0 - NO IMAGING

1 - MINMAL IMAGING

2 - DEFINED IMAGING



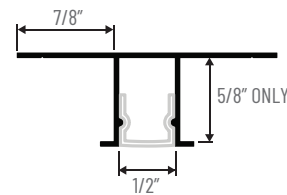
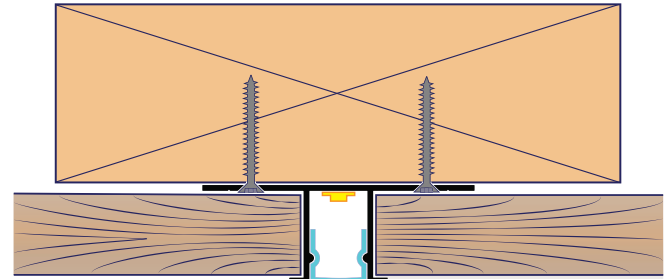
REVEAL CHANNELS (10FT)



**RV-RCM-R**

Reflective Ceiling Reveal - Mud-in ceiling mold, optional reveal

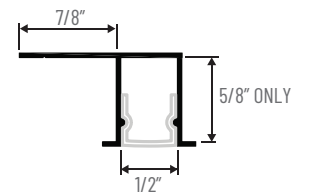
Lens Imaging      Frosted  
0                      0



**RV-ST2**

Reveal - Screed trim two sides

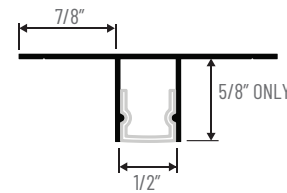
Lens Imaging      Frosted  
0                      0



**RV-ST1**

Reveal - Screed trim one side

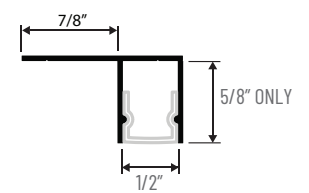
Lens Imaging      Frosted  
0                      0



**RV-S2**

Reveal - Screed trimless two sides

Lens Imaging      Frosted  
0                      0



**RV-S1**

Reveal - Screed trimless one side

Lens Imaging      Frosted  
0                      0







0 - NO IMAGING

1 - MINMAL IMAGING

2 - DEFINED IMAGING



DRIVER CUTSHEETS

DESCRIPTION	INPUT	OUTPUT	WATTAGES	SPECIFICATION SHEETS	
Non-Dimming Indoor-Outdoor	90-305VAC	24VDC	40W-480W	DR-24VDC-OUT	
Phase Dimming Indoor	100-130VAC	24VDC	24W-60W	DR-24VDC-DIMA	
0.5% & 1% Universal Dimming	100-277VAC	24VDC	30W-300W	DR-24VDC-DIMS-UNV	
0.1% & 1% Universal Dimming	120-277VAC	24VDC	96W	DR-24VDC-DIML-UNV	

VOLTAGE DROP CALCULATOR

LOAD (WIRE GAUGE)	10W	20W	30W	40W	50W	60W	70W	80W	90W	100W
20AWG	85 ft	43 ft	27 ft	21 ft	17 ft	14 ft	12 ft	11 ft	9 ft	8 ft
18AWG	134 ft	68 ft	45 ft	33 ft	27 ft	22 ft	19 ft	17 ft	15 ft	14 ft
16AWG	215 ft	109 ft	72 ft	54 ft	43 ft	36 ft	31 ft	27 ft	24 ft	22 ft
14AWG	345 ft	174 ft	115 ft	86 ft	69 ft	57 ft	49 ft	43 ft	39 ft	36 ft
12AWG	539 ft	272 ft	181 ft	135 ft	108 ft	90 ft	77 ft	68 ft	61 ft	56 ft
10AWG	784 ft	397 ft	263 ft	197 ft	158 ft	131 ft	112 ft	98 ft	87 ft	82 ft

