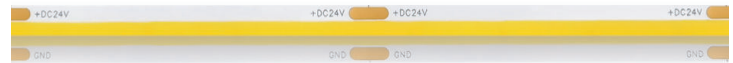


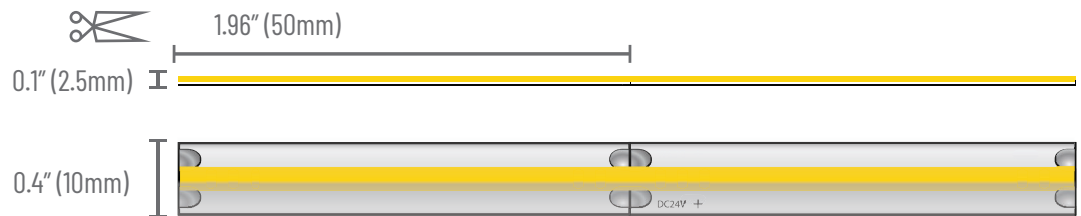
PROJECT	TYPE	NOTES
<p><b>OVERVIEW</b></p> <p>The TL24COB-VHO-OUT flexible strip light uses high efficacy LED chips to produce exceptional illumination. The utilization of remote phosphor technology makes this product perfect for direct view and shallow channel applications. With a CRI of 92 and an R9 value of 64, these LED chips offer exceptional color rendering.</p> <p>The color uniformity is further ensured by 2-step MacAdam ellipse binning. Our robust copper flexible JA8 printed circuit board allows for optimal heat dissipation. The TL24COB-VHO-OUT utilizes silicone hollow tube jacketing that guarantees color consistency across our IP20, IP65 and IP67 strips.</p>		



IP67



**IP67 - OUTDOOR**



**TECHNICAL SPECIFICATIONS**

Operating Voltage	24VDC
Power Consumption	4.6W/ft
Lumens/ft (3000K)	473m/ft
Efficacy (3000K)	96lm/W / 106lm/W
Dimming Levels	0/1% (0-10V) 1% Phase
LED Chips/ft	146/ft
LED Pitch	0/0"
Color Temperatures	2400K, 2700K, 3000K, 3500K, 4000K
CRI	92
R9 Value	64
MacAdam Ellipse Binning	3-step
LED Life	50,000 hrs
Cuttable Increments	1.96"
Max. Run Length SO / HO	16.4'
Warranty	5 years

**IES FILE (3000K)**

 [DOWNLOAD](#)

**IP67 SOLDERLESS CONNECTORS**

These connectors are simple to use on site. The pins pierce the PCB, giving a solid and permanent IP67 connection.



**TL10-OUT-SC2** - Lead 12"



**TL10-OUT SC3** - Jumper 6"

**ORDER CODE**

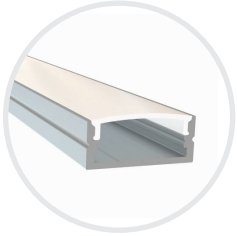
TL24COB	VHO	-	-	OUT
---------	-----	---	---	-----

**CRI / CCT**  
 924 - 90+ / 2400K  
 927 - 90+ / 2700K  
 930 - 90+ / 3000K  
 935 - 90+ / 3000K  
 940 - 90+ / 4000K

**ROLL LENGTH**  
 5 - 5M/16.4ft  
 XX - Custom



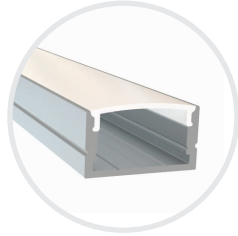
#### STANDARD ALUMINUM PROFILES (2.4M / 7.8FT)



**AP-13-2.4**



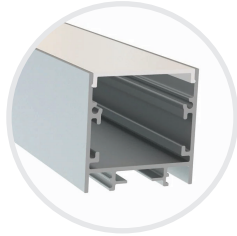
Profile Medium  
WxH 0.93" x 0.39"  
Finish Silver  
Lens Frosted  
Imaging 0



**AP-05-2.4**



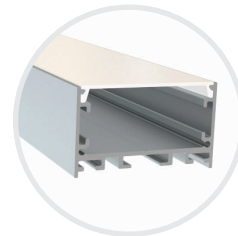
Profile Medium High  
WxH 0.93" x 0.51"  
Finish Silver  
Lens Frosted  
Imaging 0



**AP-04-2.4**



Profile Large Square  
WxH 1.44" x 1.44"  
Finish Silver, Black  
Lens Frosted, Black  
Imaging 0



**AP-21-2.4**



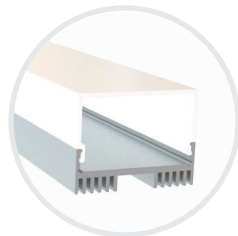
Profile Large Wide  
WxH 1.97" x 1.16"  
Finish Silver, Black  
Lens Frosted  
Imaging 0



**AP-02-2.4**



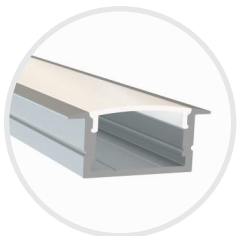
Profile Small Square Side  
WxH 0.80" x 0.80"  
Finish Silver  
Lens Frosted  
Imaging 0



**AP-03-2.4**



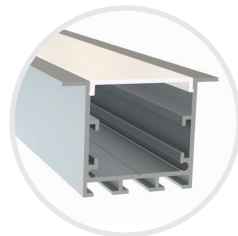
Profile Medium Side Lens  
WxH 1.14" x 0.88"  
Finish Silver  
Lens Frosted  
Imaging 0



**AP-06-2.4**



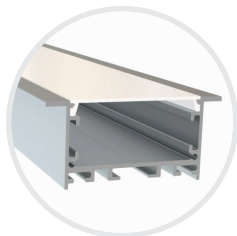
Profile Medium High Recessed  
WxH 0.93" x 0.50"  
Finish Silver  
Lens Frosted  
Imaging 0



**AP-19-2.4**



Profile Large Square Recessed  
WxH 1.44" x 1.44"  
Finish Silver  
Lens Frosted  
Imaging 0



**AP-20-2.4**

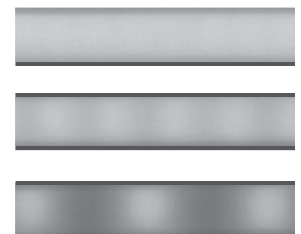


Profile Large Wide Recessed  
WxH 1.97" x 1.16"  
Finish Silver  
Lens Frosted  
Imaging 0

0 - NO IMAGING

1 - MINMAL IMAGING

2 - DEFINED IMAGING



ALUMINUM PROFILES (1M / 3.28FT)



AP-LL8-L

Profile Large Corner Mount  
 WxH 1.20" x 1.20"  
 Finish Silver  
 Lens Frosted  
 Imaging 0

0 - NO IMAGING	
1 - MINMAL IMAGING	
2 - DEFINED IMAGING	

DRIVER CUTSHEETS

DESCRIPTION	INPUT	OUTPUT	WATTAGES	SPECIFICATION SHEETS	
Non-Dimming Indoor-Outdoor	90-305VAC	24VDC	40W-480W	DR-24VDC-OUT	
Phase Dimming Indoor	100-130VAC	24VDC	24W-60W	DR-24VDC-DIMA	
0.5% & 1% Universal Dimming	100-277VAC	24VDC	30W-300W	DR-24VDC-DIMS-UNV	
0.1% & 1% Universal Dimming	120-277VAC	24VDC	96W	DR-24VDC-DIML-UNV	

VOLTAGE DROP CALCULATOR

LOAD (WIRE GAUGE)	10W	20W	30W	40W	50W	60W	70W	80W	90W	100W
20AWG	85 ft	43 ft	27 ft	21 ft	17 ft	14 ft	12 ft	11 ft	9 ft	8 ft
18AWG	134 ft	68 ft	45 ft	33 ft	27 ft	22 ft	19 ft	17 ft	15 ft	14 ft
16AWG	215 ft	109 ft	72 ft	54 ft	43 ft	36 ft	31 ft	27 ft	24 ft	22 ft
14AWG	345 ft	174 ft	115 ft	86 ft	69 ft	57 ft	49 ft	43 ft	39 ft	36 ft
12AWG	539 ft	272 ft	181 ft	135 ft	108 ft	90 ft	77 ft	68 ft	61 ft	56 ft
10AWG	784 ft	397 ft	263 ft	197 ft	158 ft	131 ft	112 ft	98 ft	87 ft	82 ft

