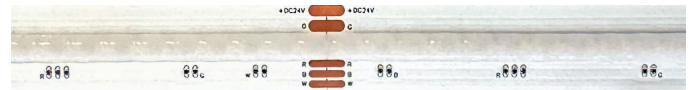
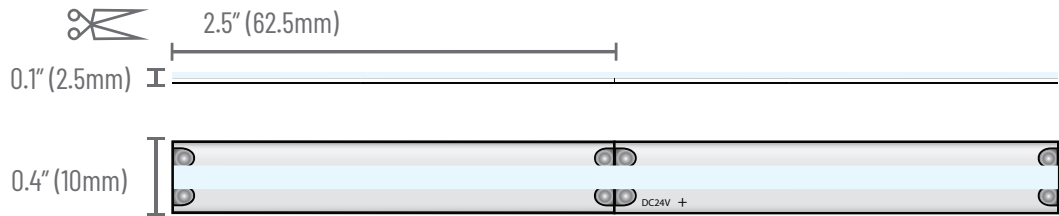


PROJECT	TYPE	NOTES
<p>OVERVIEW</p> <p>The TL24COB-RGBW flexible strip light uses high density LED chips to produce exceptional illumination. The utilization of CSP technology makes this product perfect for direct view and shallow channel applications.</p>		



IP20 - INDOOR



TECHNICAL SPECIFICATIONS

Operating Voltage	24VDC
Power Consumption	4.9W/ft
Lumens/ft	231lm/ft
Efficacy	103lm/W
Dimming Levels	1%
LED Chips/ft	273/ft
LED Pitch	0/0"
Color Temperatures	Red, Green, Blue, White (3000K)
CRI (White - 3000K)	92
LED Life	50,000 hrs
Cutable Increments	2.5"
Max. Run Length	16.4'
Warranty	5 years

SOLDERLESS CONNECTORS

These connectors fit into our smallest channels. The connectors pierce the PCB, giving a solid and permanent connection.



TLCOB-RGBW-SC1 - Link



TLCOB-RGBW-SC2 - Lead 12"



TLCOB-RGBW-SC3 - Jumper 6"

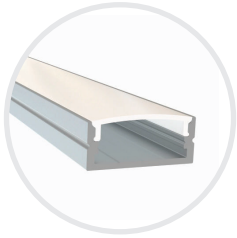
ORDER CODE

TL24COB	RGBW	-
---------	------	---

ROLL LENGTH
 5 - 5M/16.4ft
 XX - Custom



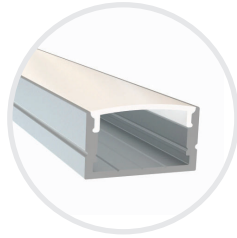
STANDARD ALUMINUM PROFILES (2.4M / 7.8FT)



AP-13-2.4



Profile	Medium
WxH	0.93" x 0.39"
Finish	Silver
Lens	Frosted
Img Rate	0



AP-05-2.4



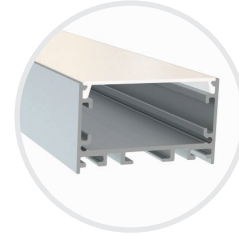
Profile	Medium High
WxH	0.93" x 0.51"
Finish	Silver
Lens	Frosted
Img Rate	0



AP-04-2.4



Profile	Large Square
WxH	1.44" x 1.44"
Finish	Silver, Black
Lens	Frosted, Black
Img Rate	0



AP-21-2.4



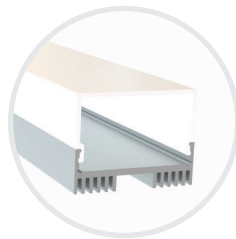
Profile	Large Wide
WxH	1.97" x 1.16"
Finish	Silver, Black
Lens	Frosted
Img Rate	0



AP-02-2.4



Profile	Small Square Side
WxH	0.80" x 0.80"
Finish	Silver
Lens	Frosted
Img Rate	0



AP-03-2.4



Profile	Medium Side Lens
WxH	1.14" x 0.88"
Finish	Silver
Lens	Frosted
Img Rate	0

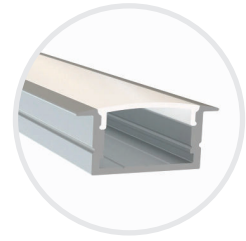
0 - NO IMAGING

1 - MINMAL IMAGING

2 - DEFINED IMAGING

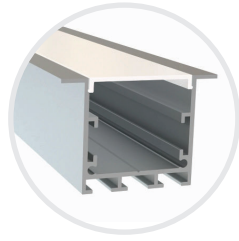



STANDARD ALUMINUM PROFILES (2.4M / 7.8FT)



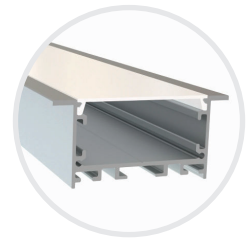
AP-06-2.4 

Profile	Medium High Recessed
WxH	0.93" x 0.50"
Finish	Silver
Lens	Frosted
Img Rate	0



AP-19-2.4 

Profile	Large Square Recessed
WxH	1.44" x 1.44"
Finish	Silver
Lens	Frosted
Img Rate	0



AP-20-2.4 

Profile	Large Wide Recessed
WxH	1.97" x 1.16"
Finish	Silver
Lens	Frosted
Img Rate	0

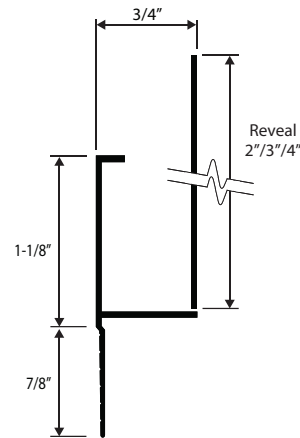
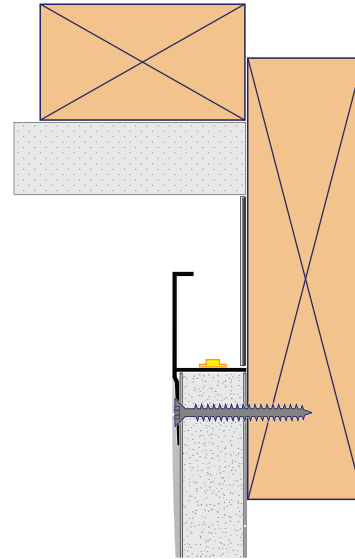
ALUMINUM PROFILES (1M / 3.28FT)




AP-LL8-L 

Profile	Large Corner Mount
WxH	1.20" x 1.20"
Finish	Silver
Lens	Frosted
Img Rate	0




REVEAL CHANNELS (10FT)



RV-RCM-R 






Reflective Ceiling Reveal - Mud-in ceiling mold, optional reveal

Lens	N/A
Img Rate	0

0 - NO IMAGING	
1 - MINMAL IMAGING	
2 - DEFINED IMAGING	



DRIVER CUTSHEETS

DESCRIPTION	INPUT	OUTPUT	WATTAGES	SPECIFICATION SHEETS	
Non-Dimming Indoor/Outdoor	110-305VAC	24VDC	30W-480W	DR-24VDC-OUT	
RGB/W Controller Indoor	12-36VDC	12-36VDC	768W max.	DR-RGBW-WIFI-CON	
RGB/W Controller Outdoor	12-24VDC	12-24VDC	480W max.	DR-RGBW-WIFI-CON-OU	
RGB/W DMX Controller	12-24VDC	12-24VDC	N/A	DR-DMX-RGBW-WIFI-CON	
5 Channel DMX Decoder	12-24VDC	12-24VDC	960W max.	DR-DMX-5CH-DEC	

VOLTAGE DROP CALCULATOR

LOAD (WIRE GAUGE)	10W	20W	30W	40W	50W	60W	70W	80W	90W	100W
20AWG	85 ft	43 ft	27 ft	21 ft	17 ft	14 ft	12 ft	11 ft	9 ft	8 ft
18AWG	134 ft	68 ft	45 ft	33 ft	27 ft	22 ft	19 ft	17 ft	15 ft	14 ft
16AWG	215 ft	109 ft	72 ft	54 ft	43 ft	36 ft	31 ft	27 ft	24 ft	22 ft
14AWG	345 ft	174 ft	115 ft	86 ft	69 ft	57 ft	49 ft	43 ft	39 ft	36 ft
12AWG	539 ft	272 ft	181 ft	135 ft	108 ft	90 ft	77 ft	68 ft	61 ft	56 ft
10AWG	784 ft	397 ft	263 ft	197 ft	158 ft	131 ft	112 ft	98 ft	87 ft	82 ft

