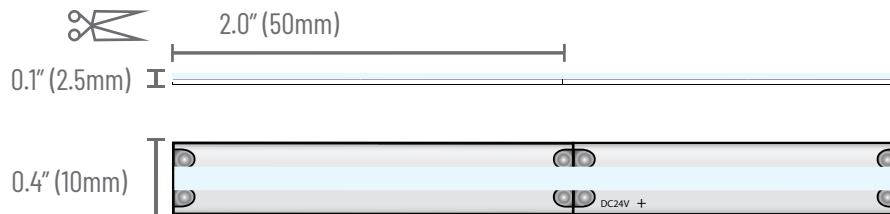


PROJECT	TYPE	NOTES
<p><b>OVERVIEW</b></p> <p>The TL24COB-RGB flexible strip light uses high density LED chips to produce exceptional illumination. The utilization of remote gel lensing makes this product perfect for direct view and shallow channel applications. The TL24COB-RGB utilizes silicone jacketing that guarantees consistency across our IP20 and IP67 strips.</p>		



**IP20 - INDOOR**



**TECHNICAL SPECIFICATIONS**

Operating Voltage	24VDC
Power Consumption	4.4W/ft
Lumens/ft	141lm/ft
Efficacy	33lm/W
Dimming Levels	1%
LED Chips/ft	256/ft
LED Pitch	0.0"
LED Life	50,000 hrs
Cutable Increments	2.0"
Max. Run Length	16.4'
Warranty	5 years

**SOLDERLESS CONNECTORS**

These connectors fit into our smallest channels. The connectors pierce the PCB, giving a solid and permanent connection.



**TLCOB-RGB-SC1** - Link



**TLCOB-RGB-SC2** - Lead 12"



**TLCOB-RGB-SC3** - Jumper 6"

**ORDER CODE**

TL24COB	RGB	-
---------	-----	---

**ROLL LENGTH**  
 5 - 5M/16.4ft  
 XX - Custom



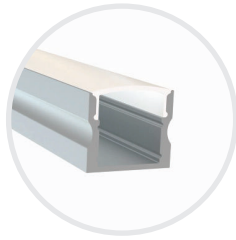
#### STANDARD ALUMINUM PROFILES (2.4M / 7.8FT)



#### AP-01-2.4



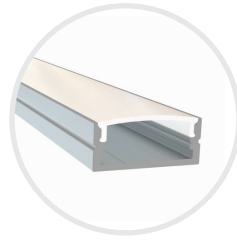
Profile	Slim Small
WxH	0.66" x 0.31"
Finish	Silver, Black
Lens	Frosted
Img Rate	0



#### AP-17-2.4



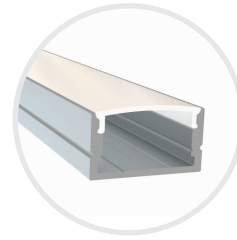
Profile	Slim Medium
WxH	0.66" x 0.60"
Finish	Silver, Black
Lens	Frosted, Black
Img Rate	0



#### AP-13-2.4



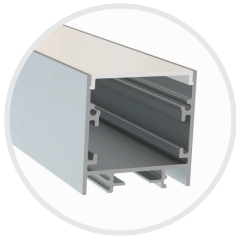
Profile	Medium
WxH	0.93" x 0.39"
Finish	Silver
Lens	Frosted
Img Rate	0



#### AP-05-2.4



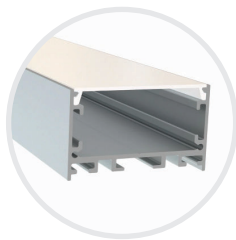
Profile	Medium High
WxH	0.93" x 0.51"
Finish	Silver
Lens	Frosted
Img Rate	0



#### AP-04-2.4



Profile	Large Square
WxH	1.44" x 1.44"
Finish	Silver, Black
Lens	Frosted, Black
Img Rate	0



#### AP-21-2.4



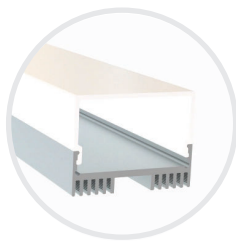
Profile	Large Wide
WxH	1.97" x 1.16"
Finish	Silver, Black
Lens	Frosted
Img Rate	0



#### AP-02-2.4



Profile	Small Square Side
WxH	0.80" x 0.80"
Finish	Silver
Lens	Frosted
Img Rate	0



#### AP-03-2.4



Profile	Medium Side Lens
WxH	1.14" x 0.88"
Finish	Silver
Lens	Frosted
Img Rate	0

0 - NO IMAGING
1 - MINMAL IMAGING
2 - DEFINED IMAGING



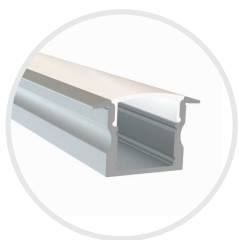
### STANDARD ALUMINUM PROFILES (2.4M / 7.8FT)



**AP-15-2.4**



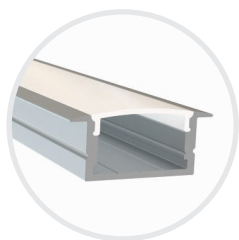
Profile Slim Small Recessed  
 WxH 0.66" x 0.31"  
 Finish Silver, Black  
 Lens Frosted  
 Img Rate 0



**AP-16-2.4**



Profile Slim Medium Recessed  
 WxH 0.66" x 0.57"  
 Finish Silver, Black  
 Lens Frosted  
 Img Rate 0



**AP-06-2.4**



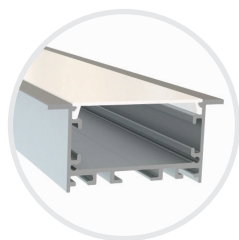
Profile Medium High Recessed  
 WxH 0.93" x 0.50"  
 Finish Silver  
 Lens Frosted  
 Img Rate 0



**AP-19-2.4**



Profile Large Square Recessed  
 WxH 1.44" x 1.44"  
 Finish Silver  
 Lens Frosted  
 Img Rate 0



**AP-20-2.4**



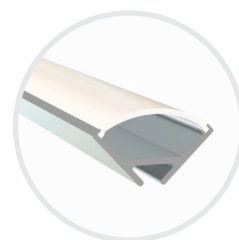
Profile Large Wide Recessed  
 WxH 1.97" x 1.16"  
 Finish Silver  
 Lens Frosted  
 Img Rate 0



**AP-07-2.4**



Profile Corner Mount Partial Lens  
 WxH 0.69" x 0.69"  
 Finish Silver  
 Lens Frosted  
 Img Rate 0



**AP-08-2.4**



Profile Corner Mount Full Lens  
 WxH 0.64" x 0.64"  
 Finish Silver  
 Lens Frosted  
 Img Rate 0

### ALUMINUM PROFILES (1M / 3.28FT)



**AP-LL8-L**



Profile Large Corner Mount  
 WxH 1.20" x 1.20"  
 Finish Silver  
 Lens Frosted  
 Img Rate 0



**AP-LL9-FCS**



Profile Square Focus\*  
 WxH 0.63" x 0.47"  
 Finish Silver  
 Lens Clear  
 Img Rate 0  
 \*Available in 10, 45°, 60°, 90°

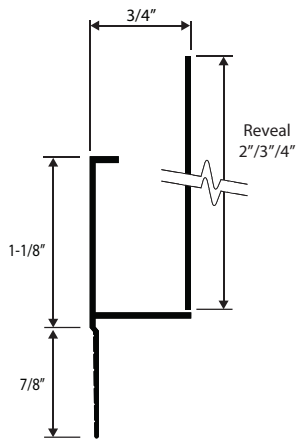
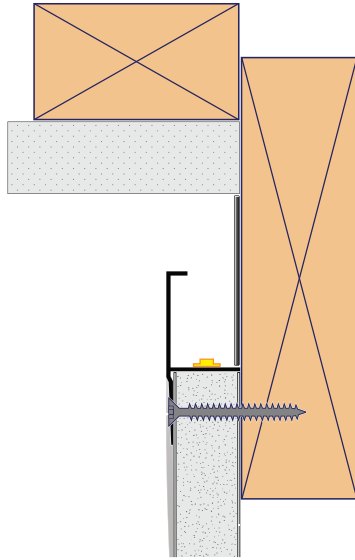
0 - NO IMAGING

1 - MINMAL IMAGING

2 - DEFINED IMAGING



REVEAL CHANNELS (10FT)



**RV-RCM-R**



Reflective Ceiling Reveal - Mud-in ceiling mold, optional reveal

Lens            Frosted  
 Img Rate      0






0 - NO IMAGING

1 - MINMAL IMAGING

2 - DEFINED IMAGING



DRIVER CUTSHEETS

DESCRIPTION	INPUT	OUTPUT	WATTAGES	SPECIFICATION SHEETS	
Non-Dimming Indoor/Outdoor	110-305VAC	24VDC	30W-480W	DR-24VDC-OUT	
RGB/W Controller Indoor	12-36VDC	12-36VDC	768W max.	DR-RGBW-WIFI-CON	
RGB/W Controller Outdoor	12-24VDC	12-24VDC	480W max.	DR-RGBW-WIFI-CON-OU	
RGB/W DMX Controller	12-24VDC	12-24VDC	N/A	DR-DMX-RGBW-WIFI-CON	
5 Channel DMX Decoder	12-24VDC	12-24VDC	960W max.	DR-DMX-5CH-DEC	

VOLTAGE DROP CALCULATOR

LOAD (WIRE GAUGE)	10W	20W	30W	40W	50W	60W	70W	80W	90W	100W
20AWG	85 ft	43 ft	27 ft	21 ft	17 ft	14 ft	12 ft	11 ft	9 ft	8 ft
18AWG	134 ft	68 ft	45 ft	33 ft	27 ft	22 ft	19 ft	17 ft	15 ft	14 ft
16AWG	215 ft	109 ft	72 ft	54 ft	43 ft	36 ft	31 ft	27 ft	24 ft	22 ft
14AWG	345 ft	174 ft	115 ft	86 ft	69 ft	57 ft	49 ft	43 ft	39 ft	36 ft
12AWG	539 ft	272 ft	181 ft	135 ft	108 ft	90 ft	77 ft	68 ft	61 ft	56 ft
10AWG	784 ft	397 ft	263 ft	197 ft	158 ft	131 ft	112 ft	98 ft	87 ft	82 ft

