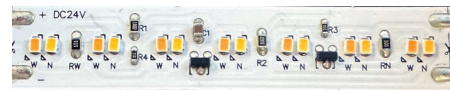
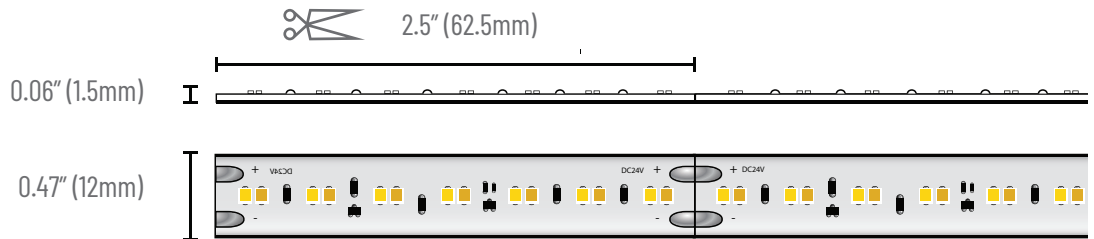


PROJECT	TYPE	NOTES
<p>OVERVIEW</p> <p>The TL24CD flexible strip light uses high density LED chips to produce exceptional illumination. The Classic Dim (DtW) function is built in and the product dims and warms at the same time when using standard dimming protocols (0-10V and TRIAC).</p>		



IP20 - INDOOR



TECHNICAL SPECIFICATIONS

	SO	HO
Operating Voltage	24VDC	
Power Consumption	2.7W/ft	5.5W/ft
Lumens/ft (3000K)	235lm/ft	528lm/ft
Efficacy (3000K)	87lm/W	88lm/W
Dimming Levels	0/1% (0-10V) 1% Phase	
LED Chips/ft	69/ft	
LED Pitch	0.26"	
Color Temperature (DtW)	3000K-1800K	
CRI	92	
R9 Value	78	
MacAdam Ellipse Binning	3-step	
LED Life	50,000 hrs	
Cutable Increments	2.5"	
Max. Run Length	21'	16.4'
Warranty	5 years	

SOLDERLESS CONNECTORS

These connectors fit into our smallest channels. The connectors pierce the PCB, giving a solid and permanent connection.



TL12-SC1 - Link



TL12-SC2 - Lead 12"



TL12-SC3 - Jumper 6"

ORDER CODE

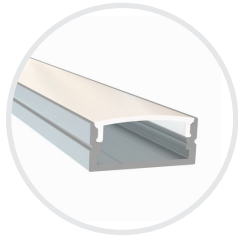
TL24CD	-	-
--------	---	---

OUTPUT
 SO - Standard
 HO - High

ROLL LENGTH
 5 - 5M/16.4ft
 XX - Custom



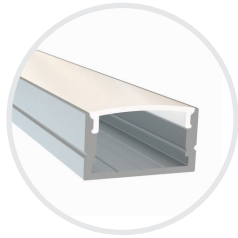
STANDARD ALUMINUM PROFILES (2.4M / 7.8FT)



AP-13-2.4



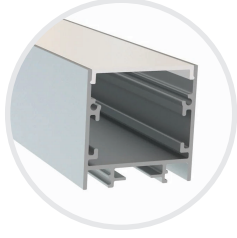
Profile Medium
WxH 0.93" x 0.39"
Finish Silver
Lens Frosted
Img Rate 1



AP-05-2.4



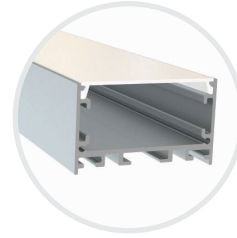
Profile Medium High
WxH 0.93" x 0.51"
Finish Silver
Lens Frosted
Img Rate 1



AP-04-2.4



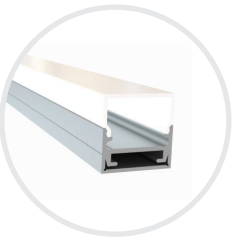
Profile Large Square
WxH 1.44" x 1.44"
Finish Silver, Black
Lens Frosted, Black
Img Rate 0



AP-21-2.4



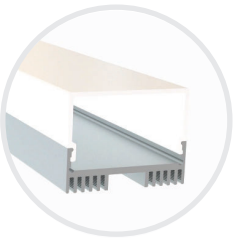
Profile Large Wide
WxH 1.97" x 1.16"
Finish Silver, Black
Lens Frosted
Img Rate 0



AP-02-2.4



Profile Small Square Side
WxH 0.80" x 0.80"
Finish Silver
Lens Frosted
Img Rate 0



AP-03-2.4



Profile Medium Side Lens
WxH 1.14" x 0.88"
Finish Silver
Lens Frosted
Img Rate 0

0 - NO IMAGING

1 - MINMAL IMAGING

2 - DEFINED IMAGING



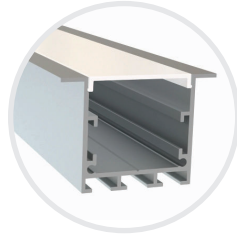
STANDARD ALUMINUM PROFILES (2.4M / 7.8FT)



AP-06-2.4



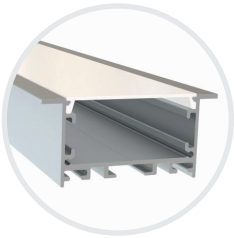
Profile	Medium High Recessed
WxH	0.93" x 0.50"
Finish	Silver
Lens	Frosted
Img Rate	1



AP-19-2.4



Profile	Large Square Recessed
WxH	1.44" x 1.44"
Finish	Silver
Lens	Frosted
Img Rate	0



AP-20-2.4



Profile	Large Wide Recessed
WxH	1.97" x 1.16"
Finish	Silver
Lens	Frosted
Img Rate	0

ALUMINUM PROFILES (1M / 3.28FT)

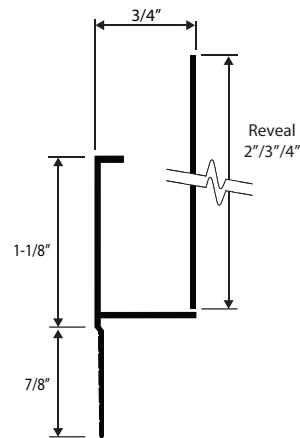
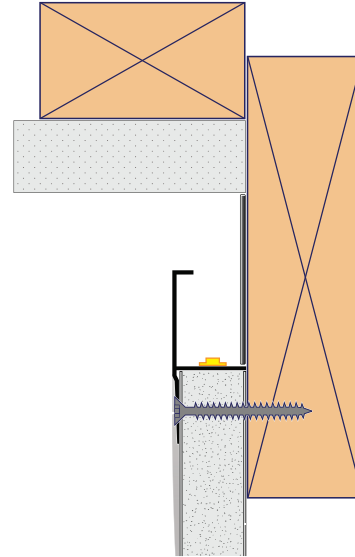


AP-LL8-L



Profile	Large Corner Mount
WxH	1.20" x 1.20"
Finish	Silver
Lens	Frosted
Img Rate	0

REVEAL CHANNELS (10FT)



RV-RCM-R



Reflective Ceiling Reveal - Mud-in ceiling mold, optional reveal

Lens	N/A
Img Rate	0

0 - NO IMAGING







1 - MINMAL IMAGING



2 - DEFINED IMAGING



DRIVER CUTSHEETS

DESCRIPTION	INPUT	OUTPUT	WATTAGES	SPECIFICATION SHEETS	
Non-Dimming Indoor-Outdoor	90-305VAC	24VDC	40W-480W	DR-24VDC-OUT	
Phase Dimming Indoor	100-130VAC	24VDC	24W-60W	DR-24VDC-DIMA	
0.5% & 1% Universal Dimming	100-277VAC	24VDC	30W-300W	DR-24VDC-DIMS-UNV	
0.1% & 1% Universal Dimming	120-277VAC	24VDC	96W	DR-24VDC-DIML-UNV	

VOLTAGE DROP CALCULATOR

LOAD (WIRE GAUGE)	10W	20W	30W	40W	50W	60W	70W	80W	90W	100W
20AWG	85 ft	43 ft	27 ft	21 ft	17 ft	14 ft	12 ft	11 ft	9 ft	8 ft
18AWG	134 ft	68 ft	45 ft	33 ft	27 ft	22 ft	19 ft	17 ft	15 ft	14 ft
16AWG	215 ft	109 ft	72 ft	54 ft	43 ft	36 ft	31 ft	27 ft	24 ft	22 ft
14AWG	345 ft	174 ft	115 ft	86 ft	69 ft	57 ft	49 ft	43 ft	39 ft	36 ft
12AWG	539 ft	272 ft	181 ft	135 ft	108 ft	90 ft	77 ft	68 ft	61 ft	56 ft
10AWG	784 ft	397 ft	263 ft	197 ft	158 ft	131 ft	112 ft	98 ft	87 ft	82 ft

