

PROJECT	TYPE	NOTES
---------	------	-------

OVERVIEW

The IG2 two inch in-ground LED lights are solidly constructed of corrosion resistant brass and 316L stainless steel. They will withstand the most challenging environments. The IG2 fixtures are rated for drive-over applications, as well as having an impact resistance of IK10. These in-ground lights are perfect for interior and exterior in-ground and step/wall lighting applications.

IES FILES (3000K)  [DOWNLOAD](#)

IP67  
IK10

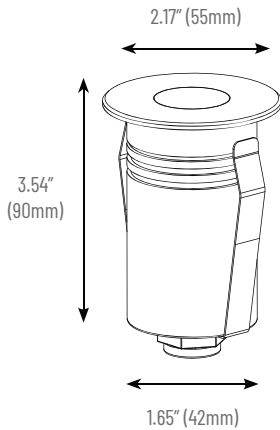


TECHNICAL SPECIFICATIONS

Operating Voltage	12VAC/DC
Power Consumption SO/HO	2.5W
Lumens Del. (3000K open trim)	137lm
Efficacy (3000K)	69lm/W
LED Chips	SMD
Color Temperatures	CCT Selectable: 2700K, 3000K, 4000K
CRI	90+
MacAdam Ellipse Binning	3-step
Beam	23°, 36°, 60°
Dimmable	YES
Housing	Solid Brass
Trims	Solid Brass / 316L stainless steel
IP Rating	67
Impact Rating	IK10
Drive-over Rated	YES
Warranty	5 years



#### DIMENSIONS Comes with 12" lead



#### INSTALLATION



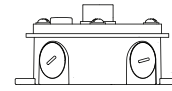
Cutout - Ø1.75"



IG2-PVC - 6" PVC pipe with coupler



IG2-IGC - In-ground Cylinder



IG2-JB - Junction box

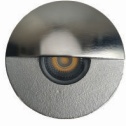
#### TRIMS



**RD - Round\***  
Ø2.17"



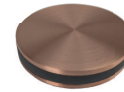
**SQ - Square\***  
2.17" x 2.17"



**WW - Wall Wash\***  
Ø2.17"



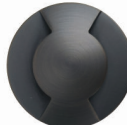
**HL - Halo**  
Ø2.17"



**SE - Side Emitting**  
Ø2.17"



**1W - 1-Way**  
Ø2.17"



**2W - 2-Way**  
Ø2.17"



**3W - 3-Way**  
Ø2.17"



**4W - 4-Way**  
Ø2.17"

\* Round, Square, and Wall Wash have optional optics of 23°, 36°, and 60° lenses, as well as accessories of honeycomb filter, diffusion or linear spread lenses.

#### FINISHES



**AB - Antique Brass**



**BL - Matte Black**



**NB - Natural Brass**



**NC - Natural Copper**



**SS - 316L Stainless Steel**



ORDER CODE

IG2	123	-	-	-	-	-	-
-----	-----	---	---	---	---	---	---

**CCT**  
 24K - 2400K  
 27K - 2700K  
 3K - 3000K  
 4K - 4000K

**BEAM**  
 23 - 23°  
 36 - 36°  
 60 - 60°





**ACCESSORY**  
 - None  
 HC - Honeycomb  
 DL - Diffusion Lens

**TRIM**  
 RD - Round  
 SQ - Square  
 WW - Wall Wash  
 HL - Halo  
 SE - Side-Emitting  
 1W - 1-Way  
 2W - 2-Way  
 3W - 3-Way  
 4W - 4-Way

**FINISH**  
 AB - Antique Brass  
 BL - Matte Black  
 NB - Natural Brass  
 NC - Natural Copper  
 SS - 316L Stainless Steel

**MOUNTING**  
 - None  
 IGC - In-ground cylinder  
 PVC - PVC pipe  
 PVC + JB - PVC pipe with J-Box (concrete pour kit)

DRIVER CUTSHEETS

DESCRIPTION	INPUT	OUTPUT	WATTAGES	SPECIFICATION SHEETS
Non-Dimming Indoor	120VAC	12VDC	15W, 30W	DR-12VDC 
Non-Dimming Indoor/Outdoor	120VAC	12VDC	30W-264W	DR-12VDC-OUT 
Universal Phase Dimming Indoor	120VAC	12VDC	24W 48W 60W	DR-12VDC-DIMA 
Univ. Phase/0-10V Dimming Ind./Out.	100-277VAC	12VDC	30W-300W	DR-12VDC-DIMS-UNV 

VOLTAGE DROP CALCULATOR Wire Gauge Calculator - Load vs AWG vs Max. Distance Away From Driver

LOAD (WIRE GAUGE)	10W	20W	30W	40W	50W	60W
20AWG	18 ft	9 ft	6 ft	5 ft	4 ft	3 ft
18AWG	34 ft	17 ft	11 ft	8 ft	6 ft	5 ft
16AWG	54 ft	27 ft	18 ft	13 ft	10 ft	9 ft
14AWG	86 ft	43 ft	29 ft	21 ft	17 ft	14 ft
12AWG	134 ft	68 ft	45 ft	34 ft	27 ft	22 ft
10AWG	199 ft	99 ft	66 ft	49 ft	39 ft	33 ft

