

PROJECT	TYPE	NOTES

OVERVIEW

The IG2 two inch in-ground LED lights are solidly constructed of corrosion resistant brass and 316L stainless steel. They will withstand the most challenging environments. The IG2 fixtures are rated for drive-over applications, as well as having an impact resistance of IK10. These in-ground lights are perfect for interior and exterior in-ground and step/wall lighting applications.

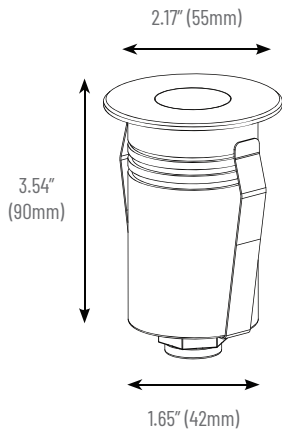
IP67
IK10



TECHNICAL SPECIFICATIONS

Operating Voltage	24VDC
Power Consumption SO/HO	2.5W
Lumens Delivered (RGBW)	53lm
Efficacy	21lm/W
LED Chips	SMD
Color Temperatures	RGBW (3000K)
CRI	90+
MacAdam Ellipse Binning	N/A
Beam	23°, 36°, 60°
Dimmable	YES
Housing	Solid Brass
Trims	Solid Brass / 316L stainless steel
IP Rating	67
Impact Rating	IK10
Drive-over Rated	YES
Warranty	5 years

DIMENSIONS Comes with 12" lead



INSTALLATION



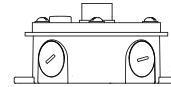
Cutout - Ø1.75"



IG2-PVC - 6" PVC pipe with coupler



IG2-IGC - In-ground Cylinder



IG2-JB - Junction box

TRIMS



RD - Round*
Ø2.17"



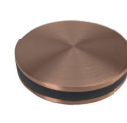
SQ - Square*
2.17" x 2.17"



WW - Wall Wash*
Ø2.17"



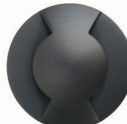
HL - Halo
Ø2.17"



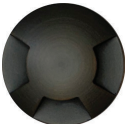
SE - Side Emitting
Ø2.17"



1W - 1-Way
Ø2.17"



2W - 2-Way
Ø2.17"



3W - 3-Way
Ø2.17"



4W - 4-Way
Ø2.17"

* Round, Square, and Wall Wash have optional optics of 23°, 36°, and 60° lenses, as well as accessories of honeycomb filter, diffusion or linear spread lenses.

FINISHES



AB - Antique Brass



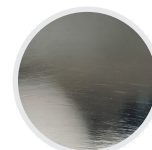
BL - Matte Black



NB - Natural Brass



NC - Natural Copper



SS - 316L Stainless Steel



ORDER CODE

IG2	243	RGBW	-	-	-	-	-
-----	-----	------	---	---	---	---	---

TRIM

- RD** - Round
- SQ** - Square
- WW** - Wall Wash
- HL** - Halo
- SE** - Side-Emitting
- 1W** - 1-Way
- 2W** - 2-Way
- 3W** - 3-Way
- 4W** - 4-Way

BEAM

- 23** - 23°
- 36** - 36°
- 60** - 60°

ACCESSORIES

- HC** - Honeycomb
- DL** - Diffusion Lens
- LS** - Linear Spread






FINISH

- AB** - Antique Brass
- BL** - Matte Black
- NB** - Natural Brass
- NC** - Natural Copper
- SS** - 316L Stainless Steel

MOUNTING

- IGC** - In-ground cylinder
- PVC** - PVC pipe
- PVC + JB** - PVC pipe with J-Box (concrete pour kit)

DRIVER CUTSHEETS

DESCRIPTION	INPUT	OUTPUT	WATTAGES	SPECIFICATION SHEETS	
Non-Dimming Indoor/Outdoor	110-305VAC	24VDC	30W-480W	DR-24VDC-OUT	
RGB/W Controller Indoor	12-36VDC	12-36VDC	768W max.	DR-RGBW-WIFI-CON	
RGB/W Controller Outdoor	12-24VDC	12-24VDC	480W max.	DR-RGBW-WIFI-CON-OU	
RGB/W DMX Controller	12-24VDC	12-24VDC	N/A	DR-DMX-RGBW-WIFI-CON	
5 Channel DMX Decoder	12-24VDC	12-24VDC	960W max.	DR-DMX-5CH-DEC	

VOLTAGE DROP CALCULATOR Wire Gauge Calculator - Load vs AWG vs Max. Distance Away From Driver

LOAD (WIRE GAUGE)	10W	20W	30W	40W	50W	60W
20AWG	18 ft	9 ft	6 ft	5 ft	4 ft	3 ft
18AWG	34 ft	17 ft	11 ft	8 ft	6 ft	5 ft
16AWG	54 ft	27 ft	18 ft	13 ft	10 ft	9 ft
14AWG	86 ft	43 ft	29 ft	21 ft	17 ft	14 ft
12AWG	134 ft	68 ft	45 ft	34 ft	27 ft	22 ft
10AWG	199 ft	99 ft	66 ft	49 ft	39 ft	33 ft

