

PROJECT	TYPE	NOTES
<p><b>OVERVIEW</b></p> <p>The IG1, one inch inground LED lights are solidly constructed of corrosion resistant brass and 316L stainless steel. They can withstand the most challenging environments. The IG1 fixtures are rated for drive-over applications, as well as having an impact resistance of IK10. These in-ground lights are great for interior and exterior lighting applications.</p>		

IES FILES (3000K)  [DOWNLOAD](#)

IP67  
IK10

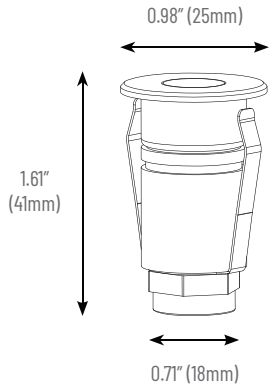


**TECHNICAL SPECIFICATIONS**

Operating Voltage	12VAC/DC
Power Consumption SO/HO	1W
Lumens Del. (3000K open trim)	64lm
Efficacy (3000K)	64lm/W
LED Chips	SMD
Color Temperatures	2700K, 3000K, 4000K
CRI	90+
MacAdam Ellipse Binning	3-step
Beam	23°, 36°, 60°
Dimmable	YES
Housing	Solid Brass
Trims	Solid Brass / 316L stainless steel
IP Rating	67
Impact Rating	IK10
Drive-over Rated	YES
Warranty	5 years



#### DIMENSIONS Comes with 12" lead



#### INSTALLATION



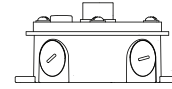
Cutout -  $\varnothing 0.75"$



IG1-PVC - 6" PVC pipe with coupler



IG1-IGC - In-ground Cylinder



IG1-JB - Junction box

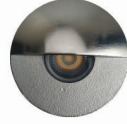
#### TRIMS



**RD - Round\***  
 $\varnothing 0.98"$



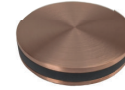
**SQ - Square\***  
 $0.98" \times 0.98"$



**WW - Wall Wash\***  
 $\varnothing 0.98"$



**HL - Halo**  
 $\varnothing 0.98"$



**SE - Side Emitting**  
 $\varnothing 0.98"$



**1W - 1-Way**  
 $\varnothing 0.98"$



**2W - 2-Way**  
 $\varnothing 0.98"$



**3W - 3-Way**  
 $\varnothing 0.98"$



**4W - 4-Way**  
 $\varnothing 0.98"$

\* Round, Square, and Wall Wash have optional optics of 23°, 36°, and 60° lenses, as well as accessories of honeycomb filter or diffusion lens.

#### FINISHES



**AB - Antique Brass**



**BL - Matte Black**



**NB - Natural Brass**



**NC - Natural Copper**







**SS - 316L Stainless Steel**



#### ORDER CODE

IG1	121	-	-	-	-	-	-
<b>CCT</b>	<b>BEAM</b>	<b>ACCESSORY</b>	<b>TRIM</b>	<b>FINISH</b>	<b>MOUNTING</b>		
24K - 2400K	23 - 23°	- None	RD - Round	AB - Antique Brass	- None		
27K - 2700K	36 - 36°	HC - Honeycomb	SQ - Square	BL - Matte Black	IGC - In-ground cylinder		
3K - 3000K	60 - 60°	DL - Diffusion Lens	WW - Wall Wash	NB - Natural Brass	PVC - PVC pipe		
4K - 4000K			HL - Halo	NC - Natural Copper	PVC + JB - PVC pipe with J-Box (concrete pour kit)		
			SE - Side-Emitting	SS - 316L Stainless Steel			
			1W - 1-Way				
			2W - 2-Way				
			3W - 3-Way				
			4W - 4-Way				

#### DRIVER CUTSHEETS

DESCRIPTION	INPUT	OUTPUT	WATTAGES	SPECIFICATION SHEETS	
Non-Dimming Indoor	120VAC	12VDC	15W, 30W	DR-12VDC	
Non-Dimming Indoor/Outdoor	120VAC	12VDC	30W-264W	DR-12VDC-OUT	
Universal Phase Dimming Indoor	120VAC	12VDC	24W 48W 60W	DR-12VDC-DIMA	
Univ. Phase/0-10V Dimming Ind./Out.	100-277VAC	12VDC	30W-300W	DR-12VDC-DIMS-UNV	

#### VOLTAGE DROP CALCULATOR Wire Gauge Calculator - Load vs AWG vs Max. Distance Away From Driver

LOAD (WIRE GAUGE)	10W	20W	30W	40W	50W	60W
20AWG	18 ft	9 ft	6 ft	5 ft	4 ft	3 ft
18AWG	34 ft	17 ft	11 ft	8 ft	6 ft	5 ft
16AWG	54 ft	27 ft	18 ft	13 ft	10 ft	9 ft
14AWG	86 ft	43 ft	29 ft	21 ft	17 ft	14 ft
12AWG	134 ft	68 ft	45 ft	34 ft	27 ft	22 ft
10AWG	199 ft	99 ft	66 ft	49 ft	39 ft	33 ft

