

PROJECT	TYPE	NOTES
<p>OVERVIEW</p> <p>The IG1, one inch inground LED lights are solidly constructed of corrosion resistant brass and 316L stainless steel. They can withstand the most challenging environments. The IG1 fixtures are rated for drive-over applications, as well as having an impact resistance of IK10. These in-ground lights are great for interior and exterior lighting applications.</p>		

**IP67
IK10**

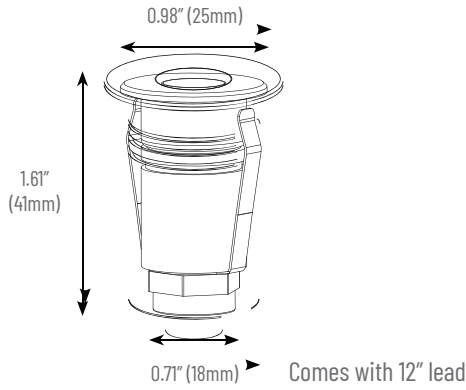


TECHNICAL SPECIFICATIONS

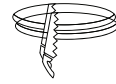
Operating Voltage	24VDC
Power Consumption	1W
Lumens Delivered (RGBW)	21lm
Efficacy	21lm/W
LED Chips	SMD
Color Temperature	RGBW (3000K)
CRI	80+
Beam	23°, 36°, 60°
Dimmable	YES
Housing	Solid Brass
Trims	Solid Brass / 316L stainless steel
IP Rating	67
Impact Rating	IK10
Drive-over Rated	YES
Warranty	5 years



DIMENSIONS



INSTALLATION



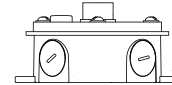
Cutout - Ø0.75"



IG1-PVC - 6" PVC pipe with coupler



IG1-IGC - In-ground Cylinder



IG1-JB - Junction box

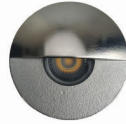
TRIMS



RD - Round*
Ø0.98"



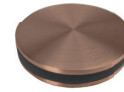
SQ - Square*
0.98" x 0.98"



WW - Wall Wash*
Ø0.98"



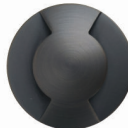
HL - Halo
Ø0.98"



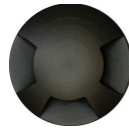
SE - Side Emitting
Ø0.98"



1W - 1-Way
Ø0.98"



2W - 2-Way
Ø0.98"



3W - 3-Way
Ø0.98"



4W - 4-Way
Ø0.98"

* Round, Square, and Wall Wash have optional optics of 23°, 36°, and 60° lenses, as well as accessories of honeycomb filter or diffusion lens.

FINISHES



AB - Antique Brass



BL - Matte Black



NB - Natural Brass



NC - Natural Copper



SS - 316L Stainless Steel







ORDER CODE

IG1	241	RGBW	-	-	-	-	-
-----	-----	------	---	---	---	---	---

- | | | | | |
|---------------------------|-----------------|----------------------------|----------------------------------|--|
| TRIM | BEAM | ACCESSORIES | FINISH | MOUNTING |
| RD - Round | 23 - 23° | HC - Honeycomb | AB - Antique Brass | IGC - In-ground cylinder |
| SQ - Square | 36 - 36° | DL - Diffusion Lens | BL - Matte Black | PVC - PVC pipe |
| WW - Wall Wash | 60 - 60° | | NB - Natural Brass | PVC + JB - PVC pipe with J-Box
(concrete pour kit) |
| HL - Halo | | | NC - Natural Copper | |
| SE - Side-Emitting | | | SS - 316L Stainless Steel | |
| 1W - 1-Way | | | | |
| 2W - 2-Way | | | | |
| 3W - 3-Way | | | | |
| 4W - 4-Way | | | | |

DRIVER CUTSHEETS

DESCRIPTION	INPUT	OUTPUT	WATTAGES	SPECIFICATION SHEETS
Non-Dimming Indoor/Outdoor	110-305VAC	24VDC	30W-480W	DR-24VDC-OUT 
RGB/W Controller Indoor	12-36VDC	12-36VDC	768W max.	DR-RGBW-WIFI-CON 
RGB/W Controller Outdoor	12-24VDC	12-24VDC	480W max.	DR-RGBW-WIFI-CON-OU 
RGB/W DMX Controller	12-24VDC	12-24VDC	N/A	DR-DMX-RGBW-WIFI-CON 
5 Channel DMX Decoder	12-24VDC	12-24VDC	960W max.	DR-DMX-5CH-DEC 