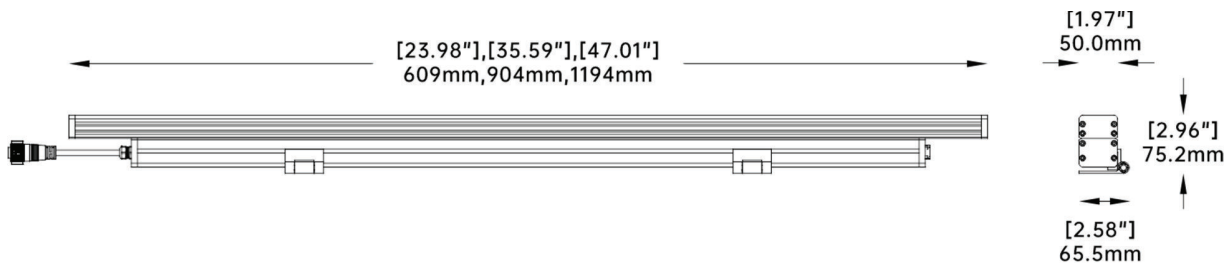


PROJECT	TYPE	NOTES
<p>OVERVIEW</p> <p>The FL-UNV wall washing/grazing system is versatile for any architectural project. Coming in three standard lengths for design flexibility. The FL-UNV allows for clean design, efficient performance for seamless integration into any project.</p>		



DIMENSIONS



TECHNICAL SPECIFICATIONS

Operating Voltage	100-277VAC
Power Consumption	18W (2ft)/27W (3ft)/36W (4ft)
Efficacy (3000K)	103lm/W
Color Temperatures	2700K, 3000K, 3500K, 4000K
Optics	13°, 20°, 25°, 35°, 45°, 10°x40°, 15°x55°, Custom
CRI	80+
MacAdam Ellipse Binning	3-step
LED Life	50,000 hrs
Housing Material	6063 Aluminum
Lens Material	Optical Grade PMMA
Cover Material	Tempered Glass
Operating Temperature	-4°F ~ 122°F -20°C ~ 50°C
Max. Load Per Circuit	1080W
Max. No. of Fixtures	30
Max. Length of Cabling (All)	65ft
Warranty	5 years

ORDER CODE

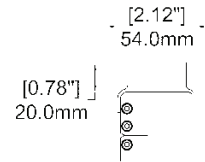
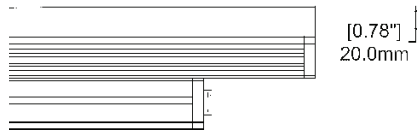
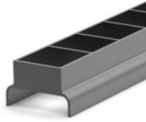
FL	UNV	-	-	-	-	-	-
INPUT	LENGTH	CRI / CCT	CONTROL	OPTIC	FINISH	FINISH	
UNV - 100-277VAC	2 - 24" 18W 3 - 36" 27W 4 - 48" 36W	827 - 80+ / 2700K 830 - 80+ / 3000K 835 - 80+ / 3500K 940 - 80+ / 4000K	NF - ON/OFF O10 - 0-10V DL - DALI TR - TRIAC ELV - ELV	13 - 13 20 - 20 25 - 25 35 - 35 45 - 45 14 - 10x40 1555 - 15x55 - Custom	BL - Black GY - Grey WH - White	BL - Black GY - Grey WH - White	



OPTICAL ACCESSORIES

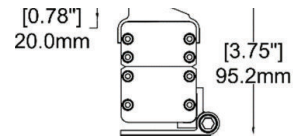
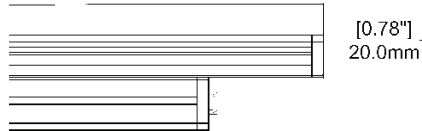
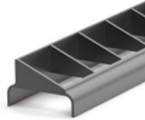
FL-UNV-0-LV-S

Louver-Symmetric



FL-UNV-0-LV-A

Louver-Asymmetric



FL-UNV-0-HC

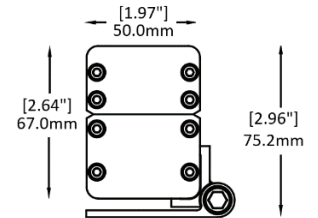
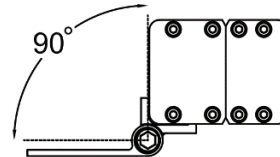
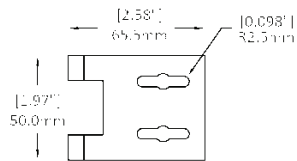
Honeycomb Filter



MOUNTING ACCESSORIES

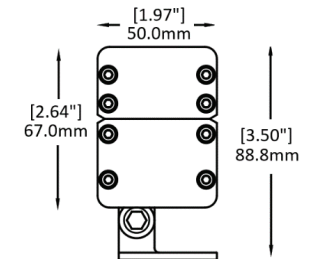
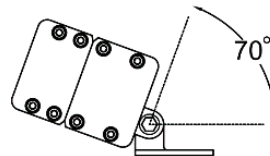
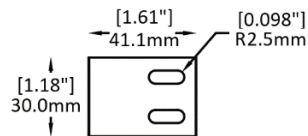
FL-UNV-M90

Honeycomb Filter



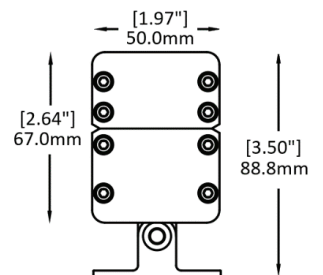
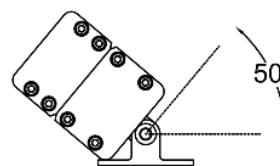
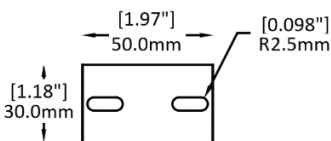
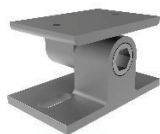
FL-UNV-M70

Honeycomb Filter

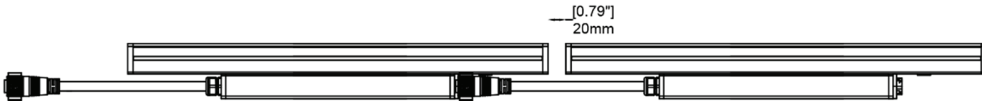


FL-UNV-M50

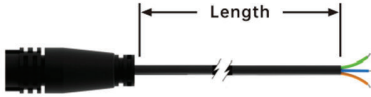
Honeycomb Filter



FIXTURE SPACING



CABLES & LINKAGE - ON/OFF, TRIAC, ELV

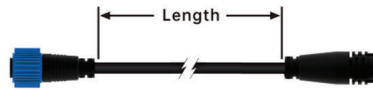


Power Feed Cable

FL-UNV-PF-[LENGTH]

Power Feed

LENGTHS: 300-300mm[0.98'], 2000-2000mm[6.56'],
6000-6000mm[19.66'], 15000-15000mm[49.21']



Interlink Cable

FL-UNV-PE-[LENGTH]

Power Extension

LENGTHS: 300-300mm[0.98'], 2000-2000mm[6.56'],
6000-6000mm[19.66']



IP Rated End Cap

FL-UNV-PEC

End Cap

CABLES & LINKAGE - 0-10V, DALI

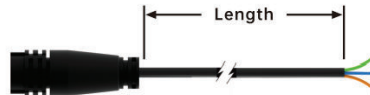


Power Feed Cable

FL-UNV-PDF-[LENGTH]

Power & Data Feed

LENGTHS: 300-300mm[0.98'], 2000-2000mm[6.56'],
6000-6000mm[19.66'], 15000-15000mm[49.21']

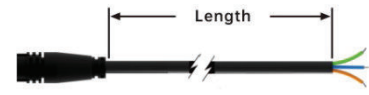


Power Feed Cable

FL-UNV-PF-[LENGTH]

Power Feed

LENGTHS: 300-300mm[0.98'], 2000-2000mm[6.56'],
6000-6000mm[19.66'], 15000-15000mm[49.21']



Data Feed Cable

FL-UNV-DF-[LENGTH]

Power Feed

LENGTHS: 300-300mm[0.98'], 2000-2000mm[6.56'],
6000-6000mm[19.66'], 15000-15000mm[49.21']

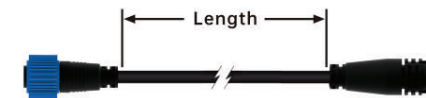


Power Booster

FL-UNV-PB-[LENGTH]

Power Booster

LENGTHS: 300-300mm[0.98'], 2000-2000mm[6.56'],
6000-6000mm[19.66'], 15000-15000mm[49.21']



Interlink Cable

FL-UNV-PDE-[LENGTH]

Power & Data Extension

LENGTHS: 300-300mm[0.98'], 2000-2000mm[6.56'],
6000-6000mm[19.66']



IP Rated End Cap

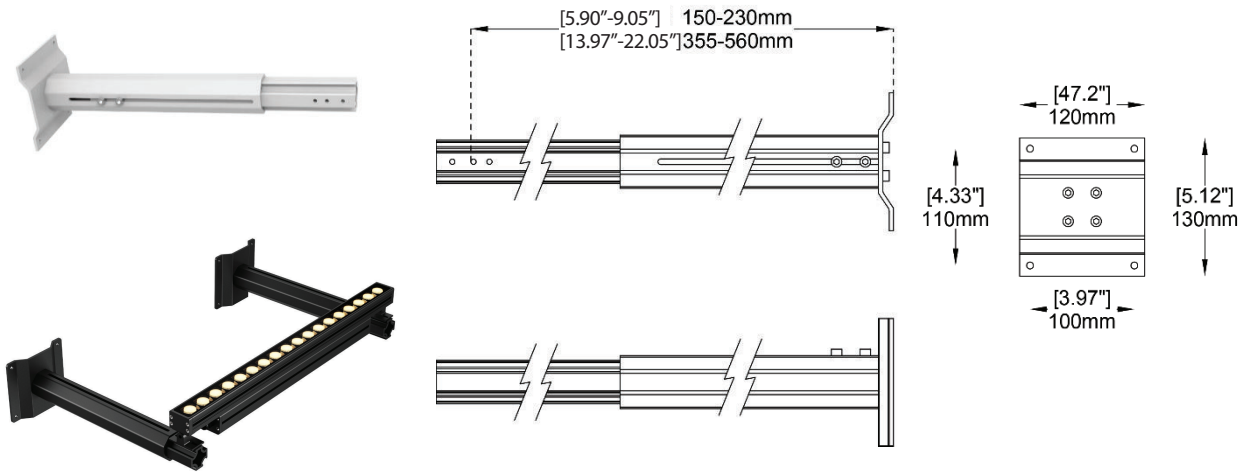
FL-UNV-PDEC

End Cap



MOUNTING ACCESSORIES

FL-UNV-M-E
Extended Mounting



FL-UNV-M-SPK
Spike Mounting

